

\*OVERHEAD OBSTRUCTIONS WITHIN USE ZONES OF PLAYGROUND EQUIPMENT THAT ARE NOT PART OF THE PLAY STRUCTURE (FOR EXAMPLE, TREE LIMBS) SHALL BE AT LEAST 84 IN. (2130mm) ABOVE EACH DESIGNATED PLAY SURFACE OR 84 IN. (2130mm) ABOVE THE PIVOT POINT OF SWINGS.

**5-12 AREA**  
 APPROXIMATE AREA OF ACCESSIBLE/PROTECTIVE UNITARY SURFACING BY OTHERS 6779 SQ.FT.  
 THE SQUARE FOOTAGE CALCULATION PROVIDED IS APPROXIMATE AND FOR ESTIMATION PURPOSES ONLY. LANDSCAPE STRUCTURES SHALL NOT BE HELD LIABLE FOR ANY COSTS ASSOCIATED WITH SURFACING BY OTHERS.



**landscape structures**

IT IS THE MANUFACTURERS OPINION AND INTENT THAT THE USE AND LAYOUT OF THESE COMPONENTS CONFORM WITH THE AMERICAN SOCIETY FOR TESTING AND MATERIALS (ASTM) STANDARD ASTM F1487

THIS PLAY AREA & PLAY EQUIPMENT IS DESIGNED FOR AGES 2-12 YEARS UNLESS OTHERWISE NOTED ON PLAN.

IT IS THE MANUFACTURERS OPINION THAT THIS PLAY AREA DOES CONFORM TO THE A.D.A. ACCESSIBILITY STANDARDS, ASSUMING AN ACCESSIBLE PROTECTIVE SURFACING IS PROVIDED, AS INDICATED, OR WITHIN THE ENTIRE USE ZONE.

THIS CONCEPTUAL PLAN WAS BASED ON INFORMATION AVAILABLE TO US. PRIOR TO CONSTRUCTION, DETAILED SITE INFORMATION INCLUDING SITE DIMENSIONS, TOPOGRAPHY, EXISTING UTILITIES, SOIL CONDITIONS, AND DRAINAGE SOLUTIONS SHOULD BE OBTAINED, EVALUATED, & UTILIZED IN THE FINAL DESIGN. PLEASE VERIFY ALL DIMENSIONS OF PLAY AREA, SIZE, ORIENTATION, AND LOCATION OF ALL EXISTING UTILITIES, EQUIPMENT, AND SITE FURNISHINGS PRIOR TO ORDERING. SLIDES SHOULD NOT FACE THE HOT AFTERNOON SUN.

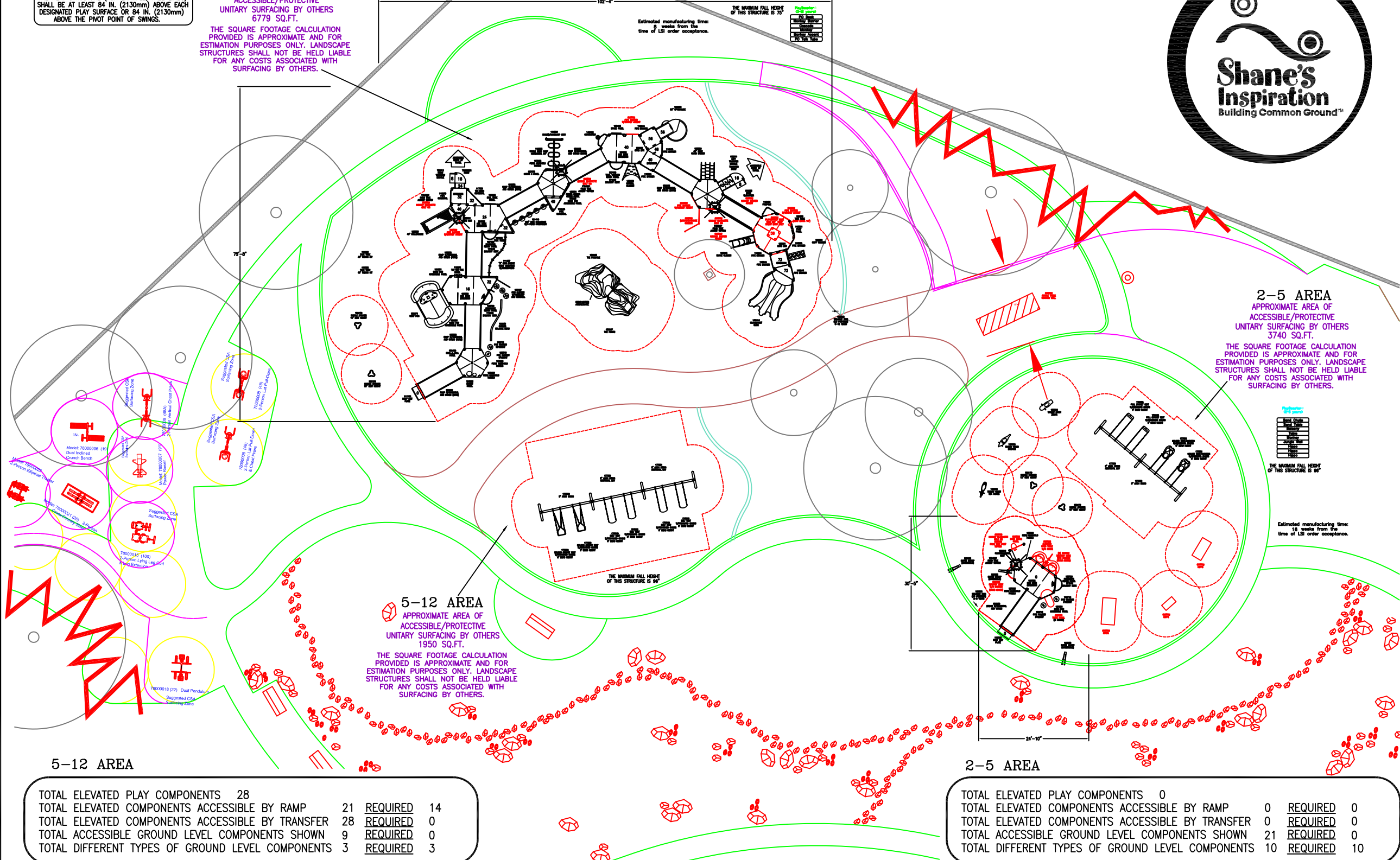
CHOOSE A PROTECTIVE SURFACING MATERIAL THAT HAS A CRITICAL HEIGHT VALUE TO MEET THE MAXIMUM FALL HEIGHT FOR THE EQUIPMENT (REF. ASTM F1487 STANDARD CONSUMER SAFETY PERFORMANCE SPECIFICATION FOR PLAYGROUND EQUIPMENT FOR PUBLIC USE, SECTION 8 CURRENT REVISION). THE SUBSURFACE MUST BE WELL DRAINED. IF THE SOIL DOES NOT DRAIN NATURALLY IT MUST BE TILED OR SLOPED 1/8" TO 1/4" PER FOOT TO A STORM SEWER OR A "FRENCH DRAIN".

AREA OF ACCESSIBLE/PROTECTIVE SURFACING (POURED-IN-PLACE SUGGESTED)

DESIGNED BY:

COPYRIGHT: 2010  
 LANDSCAPE STRUCTURES, INC.  
 601 7th STREET SOUTH - P.O. BOX 198  
 DELANO, MINNESOTA 55328  
 PH: 1-800-328-0035 FAX: 1-763-972-6091

Date Previous Drawing # Initials

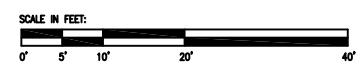


**5-12 AREA**

TOTAL ELEVATED PLAY COMPONENTS	28		
TOTAL ELEVATED COMPONENTS ACCESSIBLE BY RAMP	21	REQUIRED	14
TOTAL ELEVATED COMPONENTS ACCESSIBLE BY TRANSFER	28	REQUIRED	0
TOTAL ACCESSIBLE GROUND LEVEL COMPONENTS SHOWN	9	REQUIRED	0
TOTAL DIFFERENT TYPES OF GROUND LEVEL COMPONENTS	3	REQUIRED	3

**2-5 AREA**

TOTAL ELEVATED PLAY COMPONENTS	0		
TOTAL ELEVATED COMPONENTS ACCESSIBLE BY RAMP	0	REQUIRED	0
TOTAL ELEVATED COMPONENTS ACCESSIBLE BY TRANSFER	0	REQUIRED	0
TOTAL ACCESSIBLE GROUND LEVEL COMPONENTS SHOWN	21	REQUIRED	0
TOTAL DIFFERENT TYPES OF GROUND LEVEL COMPONENTS	10	REQUIRED	10



Westside Park  
 Los Angeles, CA

SYSTEM TYPE:  
 PlayBooster  
 DRAWING #:  
 37836-1-6

