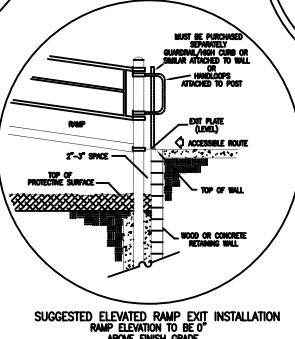
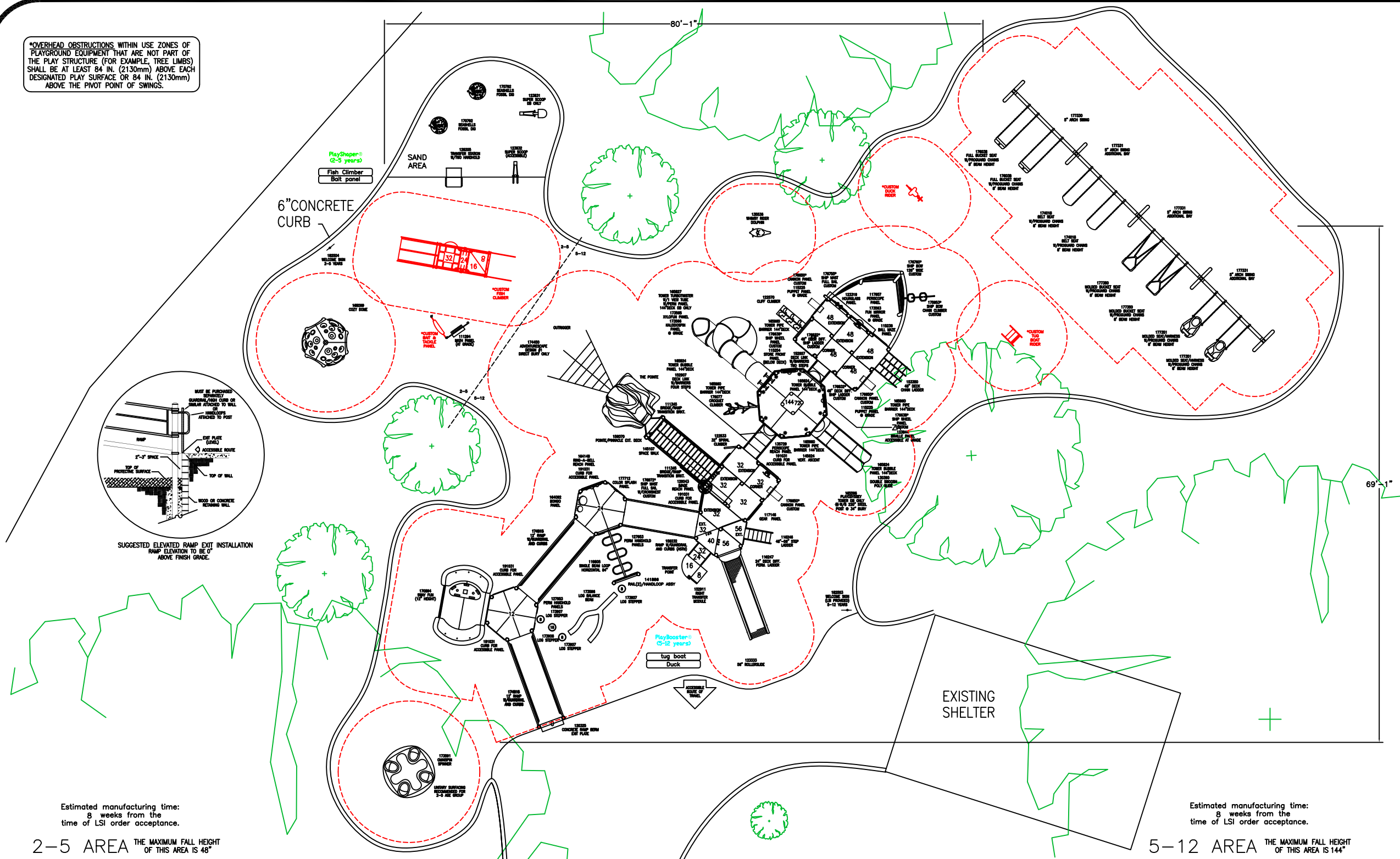


\*OVERHEAD OBSTRUCTIONS WITHIN USE ZONES OF PLAYGROUND EQUIPMENT THAT ARE NOT PART OF THE PLAY STRUCTURE (FOR EXAMPLE, TREE LIMBS) SHALL BE AT LEAST 84 IN. (2130mm) ABOVE EACH DESIGNATED PLAY SURFACE OR 84 IN. (2130mm) ABOVE THE PIVOT POINT OF SWINGS.



Estimated manufacturing time: 8 weeks from the time of LSI order acceptance.

Estimated manufacturing time: 8 weeks from the time of LSI order acceptance.

2-5 AREA THE MAXIMUM FALL HEIGHT OF THIS AREA IS 48"

5-12 AREA THE MAXIMUM FALL HEIGHT OF THIS AREA IS 144"

TOTAL ELEVATED PLAY COMPONENTS	3		
TOTAL ELEVATED COMPONENTS ACCESSIBLE BY RAMP	0	REQUIRED	0
TOTAL ELEVATED COMPONENTS ACCESSIBLE BY TRANSFER	3	REQUIRED	2
TOTAL ACCESSIBLE GROUND LEVEL COMPONENTS SHOWN	7	REQUIRED	1
TOTAL DIFFERENT TYPES OF GROUND LEVEL COMPONENTS	5	REQUIRED	5

TOTAL ELEVATED PLAY COMPONENTS	33		
TOTAL ELEVATED COMPONENTS ACCESSIBLE BY RAMP	11	REQUIRED	9
TOTAL ELEVATED COMPONENTS ACCESSIBLE BY TRANSFER	26	REQUIRED	9
TOTAL ACCESSIBLE GROUND LEVEL COMPONENTS SHOWN	22	REQUIRED	11
TOTAL DIFFERENT TYPES OF GROUND LEVEL COMPONENTS	15	REQUIRED	15

landscape structures



The play components identified on this plan are IPEMA certified. (Unless model number is preceded with \*) The use and layout of these components conform to the requirements of ASTM F1487. To verify product certification, visit www.ipema.org

THIS PLAY AREA & PLAY EQUIPMENT IS DESIGNED FOR AGES 2-12 YEARS UNLESS OTHERWISE NOTED ON PLAN.

IT IS THE MANUFACTURERS OPINION THAT THIS PLAY AREA DOES CONFORM TO THE A.D.A. ACCESSIBILITY STANDARDS, ASSUMING AN ACCESSIBLE PROTECTIVE SURFACING IS PROVIDED, AS INDICATED, OR WITHIN THE ENTIRE USE ZONE.

THIS CONCEPTUAL PLAN WAS BASED ON INFORMATION AVAILABLE TO US. PRIOR TO CONSTRUCTION, DETAILED SITE INFORMATION INCLUDING SITE DIMENSIONS, TOPOGRAPHY, EXISTING UTILITIES, SOIL CONDITIONS, AND DRAINAGE SOLUTIONS SHOULD BE OBTAINED, EVALUATED, & UTILIZED IN THE FINAL DESIGN. PLEASE VERIFY ALL DIMENSIONS OF PLAY AREA, SIZE, ORIENTATION, AND LOCATION OF ALL EXISTING UTILITIES, EQUIPMENT, AND SITE FURNISHINGS PRIOR TO ORDERING. SLIDES SHOULD NOT FACE THE HOT AFTERNOON SUN.

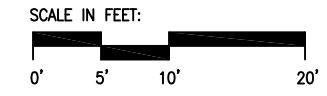
CHOOSE A PROTECTIVE SURFACING MATERIAL THAT HAS A CRITICAL HEIGHT VALUE TO MEET THE MAXIMUM FALL HEIGHT FOR THE EQUIPMENT (REF. ASTM F1487 STANDARD CONSUMER SAFETY PERFORMANCE SPECIFICATION FOR PLAYGROUND EQUIPMENT FOR PUBLIC USE, SECTION 8 CURRENT REVISION). THE SUBSURFACE MUST BE WELL DRAINED. IF THE SOIL DOES NOT DRAIN NATURALLY IT MUST BE TILED OR SLOPED 1/8" TO 1/4" PER FOOT TO A STORM SEWER OR A "FRENCH DRAIN".

AREA OF ACCESSIBLE/PROTECTIVE SURFACING (POURED-IN-PLACE SUGGESTED)

DESIGNED BY:

COPYRIGHT: 2012  
LANDSCAPE STRUCTURES, INC.  
601 7th STREET SOUTH - P.O. BOX 198  
DELANO, MINNESOTA 55328  
PH: 1-800-328-0035 FAX: 1-763-972-6091

Date Previous Drawing # Initials



Waterworks  
Inclusive Playground  
Beaver Dam, WI

SYSTEM TYPE:  
PlayBooster  
DRAWING #:  
60702-1-2

