

IT IS THE MANUFACTURERS OPINION AND INTENT THAT THE USE AND LAYOUT OF THESE COMPONENTS CONFORM WITH THE AMERICAN SOCIETY FOR TESTING AND MATERIALS (ASTM) STANDARD ASTM F1487

THIS PLAY AREA & EQUIPMENT IS DESIGNED FOR AGES 2-12 YEARS UNLESS OTHERWISE NOTED ON PLAN.

IT IS THE MANUFACTURERS OPINION THAT THIS PLAY AREA DOES CONFORM TO THE A.D.A. ACCESSIBILITY STANDARDS, ASSUMING AN ACCESSIBLE PROTECTIVE SURFACING IS PROVIDED, AS INDICATED, OR WITHIN THE ENTIRE USE ZONE.

THIS CONCEPTUAL PLAN WAS BASED ON INFORMATION AVAILABLE TO US. PRIOR TO CONSTRUCTION, DETAILED SITE INFORMATION INCLUDING SITE DIMENSIONS, TOPOGRAPHY EXISTING UTILITIES, SOIL CONDITIONS, AND DRAINAGE SOLUTIONS SHOULD BE OBTAINED, EVALUATED, & UTILIZED IN THE FINAL DESIGN. PLEASE VERIFY ALL DIMENSIONS OF PLAY AREA, SIZE, ORIENTATION, AND LOCATION OF ALL EXISTING UTILITIES, EQUIPMENT, AND SITE FURNISHINGS PRIOR TO ORDERING. SLIDES SHOULD NOT FACE THE HOT AFTERNOON SUN.

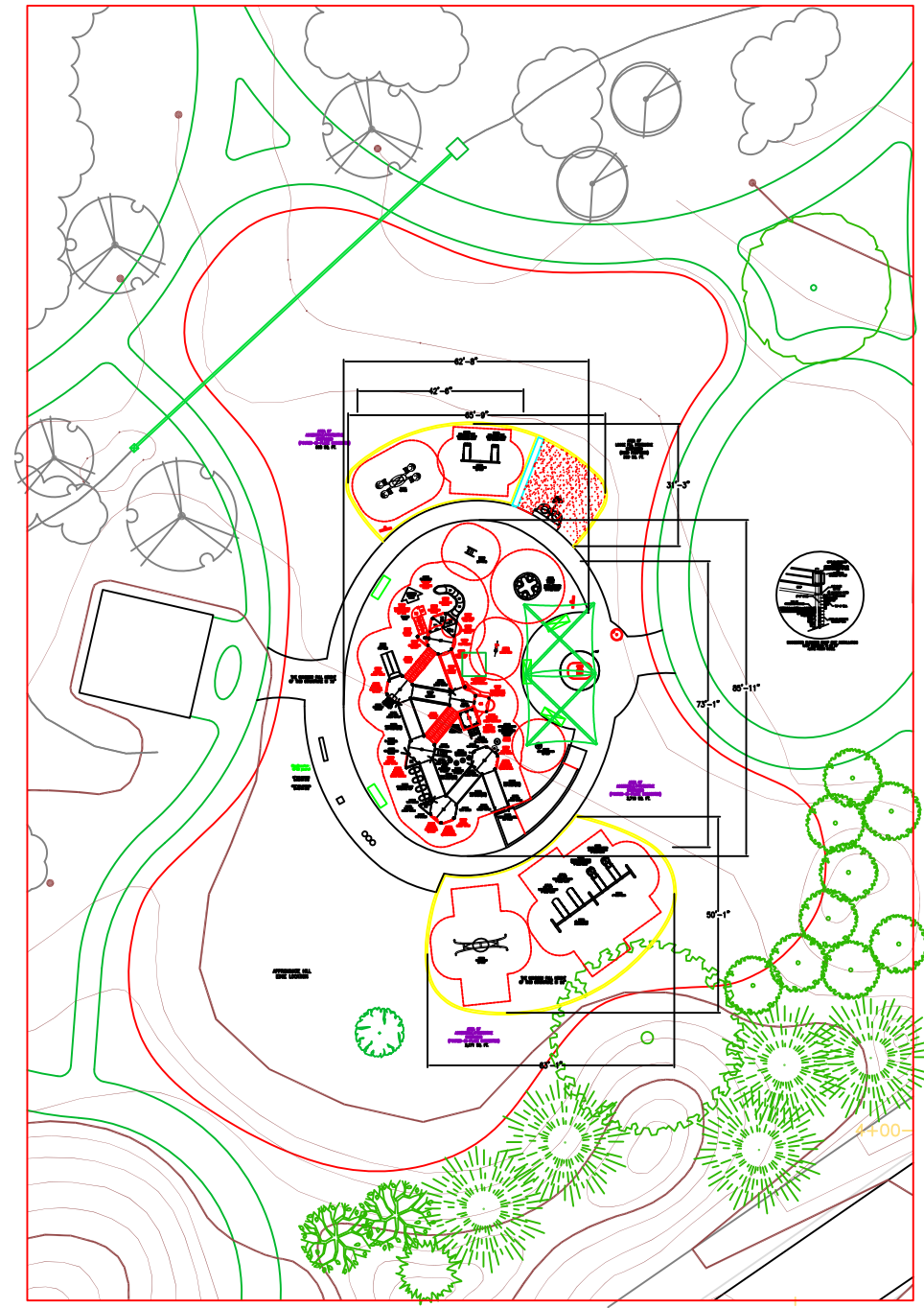
CHOOSE A PROTECTIVE SURFACING MATERIAL THAT HAS A CRITICAL HEIGHT VALUE TO MEET THE MAXIMUM FALL HEIGHT FOR THE EQUIPMENT (REF. ASTM F1487 STANDARD CONSUMER SAFETY PERFORMANCE SPECIFICATION FOR PLAYGROUND EQUIPMENT FOR PUBLIC USE, SECTION 8 CURRENT REVISION).

AREA OF ACCESSIBLE/PROTECTIVE SURFACING (POURED-IN-PLACE SUGGESTED)

DESIGNED BY:

COPYRIGHT: 9/4/14  
LANDSCAPE STRUCTURES, INC.  
801 7th STREET SOUTH - P.O. BOX 198  
DELANO, MINNESOTA 55328  
PH: 1-800-328-0035 FAX: 1-763-972-6091

Date Previous Drawing # Initials



- 1" = 10'
- 2" = 20'
- 3" = 30'
- 4" = 40'
- 5" = 50'
- 6" = 60'
- 7" = 70'
- 8" = 80'
- 9" = 90'
- 10" = 100'
- 11" = 110'
- 12" = 120'
- 13" = 130'
- 14" = 140'
- 15" = 150'
- 16" = 160'
- 17" = 170'
- 18" = 180'
- 19" = 190'
- 20" = 200'
- 21" = 210'
- 22" = 220'
- 23" = 230'
- 24" = 240'
- 25" = 250'
- 26" = 260'
- 27" = 270'
- 28" = 280'
- 29" = 290'
- 30" = 300'
- 31" = 310'
- 32" = 320'
- 33" = 330'
- 34" = 340'
- 35" = 350'
- 36" = 360'
- 37" = 370'
- 38" = 380'
- 39" = 390'
- 40" = 400'
- 41" = 410'
- 42" = 420'
- 43" = 430'
- 44" = 440'
- 45" = 450'
- 46" = 460'
- 47" = 470'
- 48" = 480'
- 49" = 490'
- 50" = 500'
- 51" = 510'
- 52" = 520'
- 53" = 530'
- 54" = 540'
- 55" = 550'
- 56" = 560'
- 57" = 570'
- 58" = 580'
- 59" = 590'
- 60" = 600'
- 61" = 610'
- 62" = 620'
- 63" = 630'
- 64" = 640'
- 65" = 650'
- 66" = 660'
- 67" = 670'
- 68" = 680'
- 69" = 690'
- 70" = 700'
- 71" = 710'
- 72" = 720'
- 73" = 730'
- 74" = 740'
- 75" = 750'
- 76" = 760'
- 77" = 770'
- 78" = 780'
- 79" = 790'
- 80" = 800'
- 81" = 810'
- 82" = 820'
- 83" = 830'
- 84" = 840'
- 85" = 850'
- 86" = 860'
- 87" = 870'
- 88" = 880'
- 89" = 890'
- 90" = 900'
- 91" = 910'
- 92" = 920'
- 93" = 930'
- 94" = 940'
- 95" = 950'
- 96" = 960'
- 97" = 970'
- 98" = 980'
- 99" = 990'
- 100" = 1000'

2-5 AREA: WEESAW, TODDLER SWING, SAND TABLE

TOTAL ELEVATED PLAY COMPONENTS	0		
TOTAL ELEVATED COMPONENTS ACCESSIBLE BY RAMP	0	REQUIRED	0
TOTAL ELEVATED COMPONENTS ACCESSIBLE BY TRANSFER	0	REQUIRED	0
TOTAL ACCESSIBLE GROUND LEVEL COMPONENTS SHOWN	4	REQUIRED	0
TOTAL DIFFERENT TYPES OF GROUND LEVEL COMPONENTS	3	REQUIRED	3

Custom product manufacturing time for this project will be 14 weeks from the time of LSI order acceptance.

5-12 AREA: OODLE, ARCH SWING, STRUCTURE AREA

TOTAL ELEVATED PLAY COMPONENTS	19		
TOTAL ELEVATED COMPONENTS ACCESSIBLE BY RAMP	14	REQUIRED	10
TOTAL ELEVATED COMPONENTS ACCESSIBLE BY TRANSFER	18	REQUIRED	0
TOTAL ACCESSIBLE GROUND LEVEL COMPONENTS SHOWN	11	REQUIRED	0
TOTAL DIFFERENT TYPES OF GROUND LEVEL COMPONENTS	5	REQUIRED	5



Orchard Park

SYSTEM TYPE:  
PlayBooster

DRAWING #:  
65942-1-13

