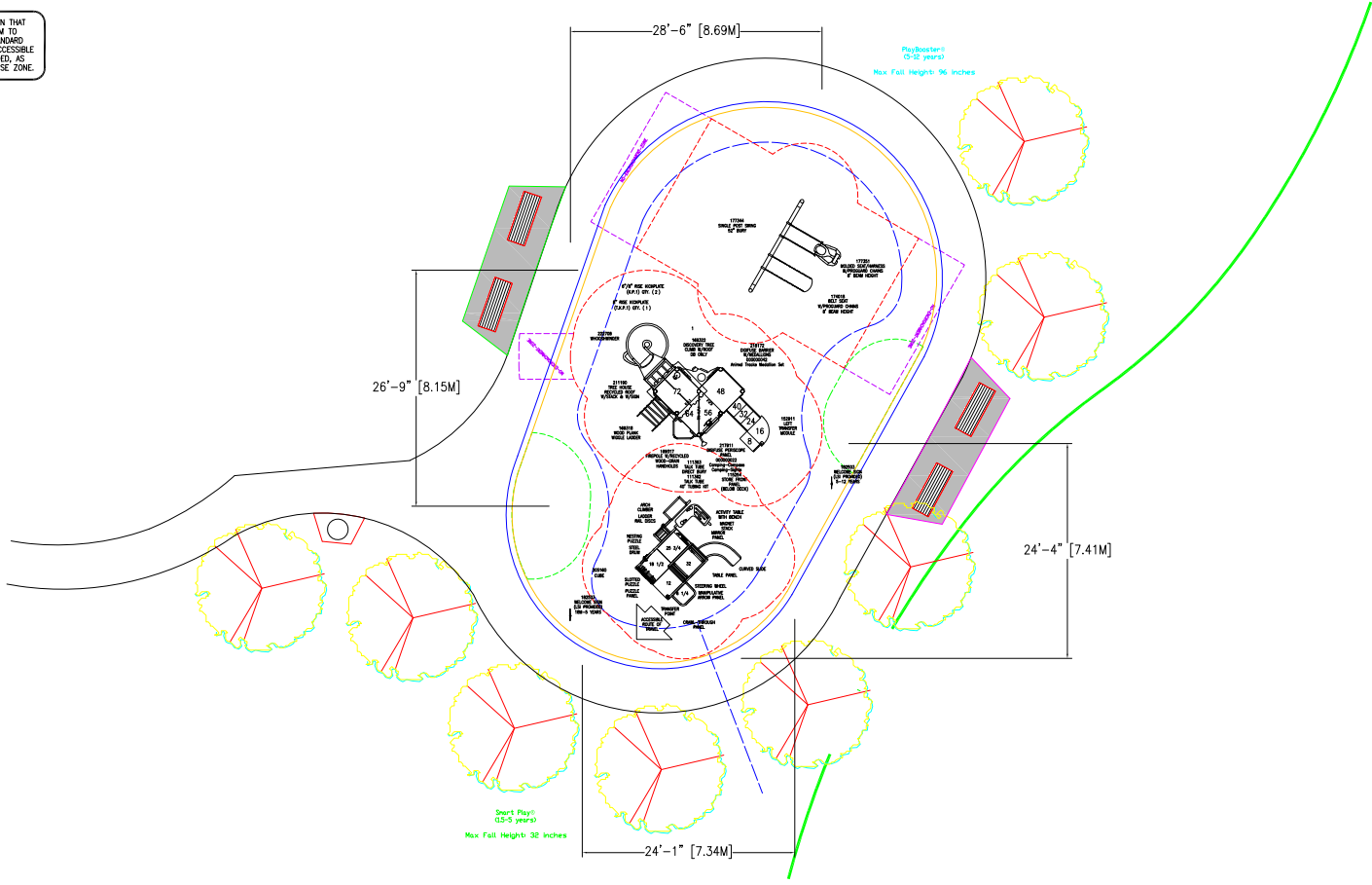


IT IS THE MANUFACTURERS OPINION AND INTENT THAT THE USE AND LAYOUT OF THESE COMPONENTS CONFORM WITH THE CANADIAN STANDARDS ASSOCIATION (CSA) STANDARD CAN/CSA-2614

IT IS THE MANUFACTURERS OPINION THAT THIS PLAY AREA DOES CONFORM TO THE CSA 2614-14 ANNEX H STANDARD FOR ACCESSIBILITY, ASSUMING AN ACCESSIBLE PROTECTIVE SURFACING IS PROVIDED AS INDICATED, OR WITHIN THE ENTIRE USE ZONE.



landscape structures



The play components identified on this plan are IPEMA certified. (Unless otherwise noted) The use and layout of these components conform to the Canadian Standards Association (CSA) Standard CAN/CSA-2614. To verify product certification, visit www.ipema.org.

THIS PLAY AREA & PLAY EQUIPMENT IS DESIGNED FOR AGES 8-14 MONTHS UNLESS OTHERWISE NOTED ON PLAN.

THIS CONCEPTUAL PLAN WAS BASED ON INFORMATION AVAILABLE TO US, PRIOR TO CONSTRUCTION. DETAILED SITE INFORMATION INCLUDING SITE DIMENSIONS, TOPOGRAPHY, EXISTING UTILITIES, SOIL CONDITIONS, AND DRAINAGE SOLUTIONS SHOULD BE OBTAINED, EVALUATED, & UTILIZED IN THE FINAL DESIGN. PLEASE VERIFY ALL DIMENSIONS OF PLAY AREA, SIZE, ORIENTATION, AND LOCATION OF ALL EXISTING UTILITIES, EQUIPMENT, AND SITE FURNISHINGS PRIOR TO ORDERING. SLIDES SHOULD NOT FACE THE HOT AFTERNOON SUN.

CHOOSE A PROTECTIVE SURFACING MATERIAL THAT HAS A CRITICAL HEIGHT VALUE TO MEET THE MAXIMUM FALL HEIGHT FOR THE EQUIPMENT (REF. ASTM F1487 STANDARD CONSUMER SAFETY PERFORMANCE SPECIFICATION FOR PLAYGROUND EQUIPMENT FOR PUBLIC USE, SECTION 8 CURRENT REVISION). THE SUBSURFACE MUST BE WELL DRAINED IF THE SOIL DOES NOT DRAIN NATURALLY IT MUST BE TILED OR SLOPED 1/8" TO 1/4" PER FOOT TO A STORM SEWER OR A "FRENCH DRAIN".

ACCESSIBLE/PROTECTIVE LOOSE FILL MATERIAL (ENGINEERED WOOD FIBER SUGGESTED) 2094 SQ. FT.

DESIGNED BY:

COPYRIGHT: 8/11/17
LANDSCAPE STRUCTURES, INC.
601 7th STREET SOUTH - P.O. BOX 198
ISLAND, MINNESOTA 55229
Ph: 1-800-328-0035 FAX: 1-763-972-6091

Date	Previous Drawing #	Initials



12th Line Park
Innisfil, ON

A.B.C.
Recreation, LTD

SYSTEM TYPE:
PlayBooster

DRAWING #:

