



IT IS THE MANUFACTURERS OPINION AND INTENT THAT THE USE AND LAYOUT OF THESE COMPONENTS CONFORM WITH THE AMERICAN SOCIETY FOR TESTING AND MATERIALS (ASTM) STANDARD F1487

THIS PLAY AREA & PLAY EQUIPMENT IS DESIGNED FOR AGES 2-12 YEARS UNLESS OTHERWISE NOTED ON PLAN.

IT IS THE MANUFACTURERS OPINION THAT THIS PLAY AREA DOES CONFORM TO THE A.D.A. ACCESSIBILITY STANDARDS, ASSUMING AN ACCESSIBLE PROTECTIVE SURFACING IS PROVIDED, AS INDICATED, OR WITHIN THE ENTIRE USE ZONE.

THIS CONCEPTUAL PLAN WAS BASED ON INFORMATION AVAILABLE TO US, PRIOR TO CONSTRUCTION. DETAILED SITE INFORMATION INCLUDING SITE DIMENSIONS, TOPOGRAPHY, EXISTING UTILITIES, SOIL CONDITIONS, AND DRAINAGE SOLUTIONS SHOULD BE OBTAINED, EVALUATED, & UTILIZED IN THE FINAL DESIGN. PLEASE VERIFY ALL DIMENSIONS OF PLAY AREA, SIZE, ORIENTATION, AND LOCATION OF ALL EXISTING UTILITIES, EQUIPMENT, AND SITE FURNISHINGS PRIOR TO ORDERING. SLIDES SHOULD NOT FACE THE HOT AFTERNOON SUN.

CHOOSE A PROTECTIVE SURFACING MATERIAL THAT HAS A CRITICAL HEIGHT VALUE TO MEET THE MAXIMUM FALL HEIGHT FOR THE EQUIPMENT (REF. ASTM F1487 STANDARD CONSUMER SAFETY PERFORMANCE SPECIFICATION FOR PLAYGROUND EQUIPMENT FOR PUBLIC USE, SECTION 8 CURRENT REVISION). THE SUBSURFACE MUST BE WELL DRAINED IF THE SOIL DOES NOT DRAIN NATURALLY IT MUST BE TILED OR SLOPED 1/8" TO 1/4" PER FOOT TO A STORM SEWER OR A "FRENCH DRAIN".

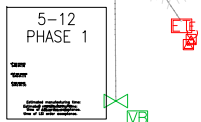
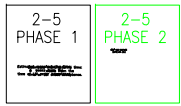
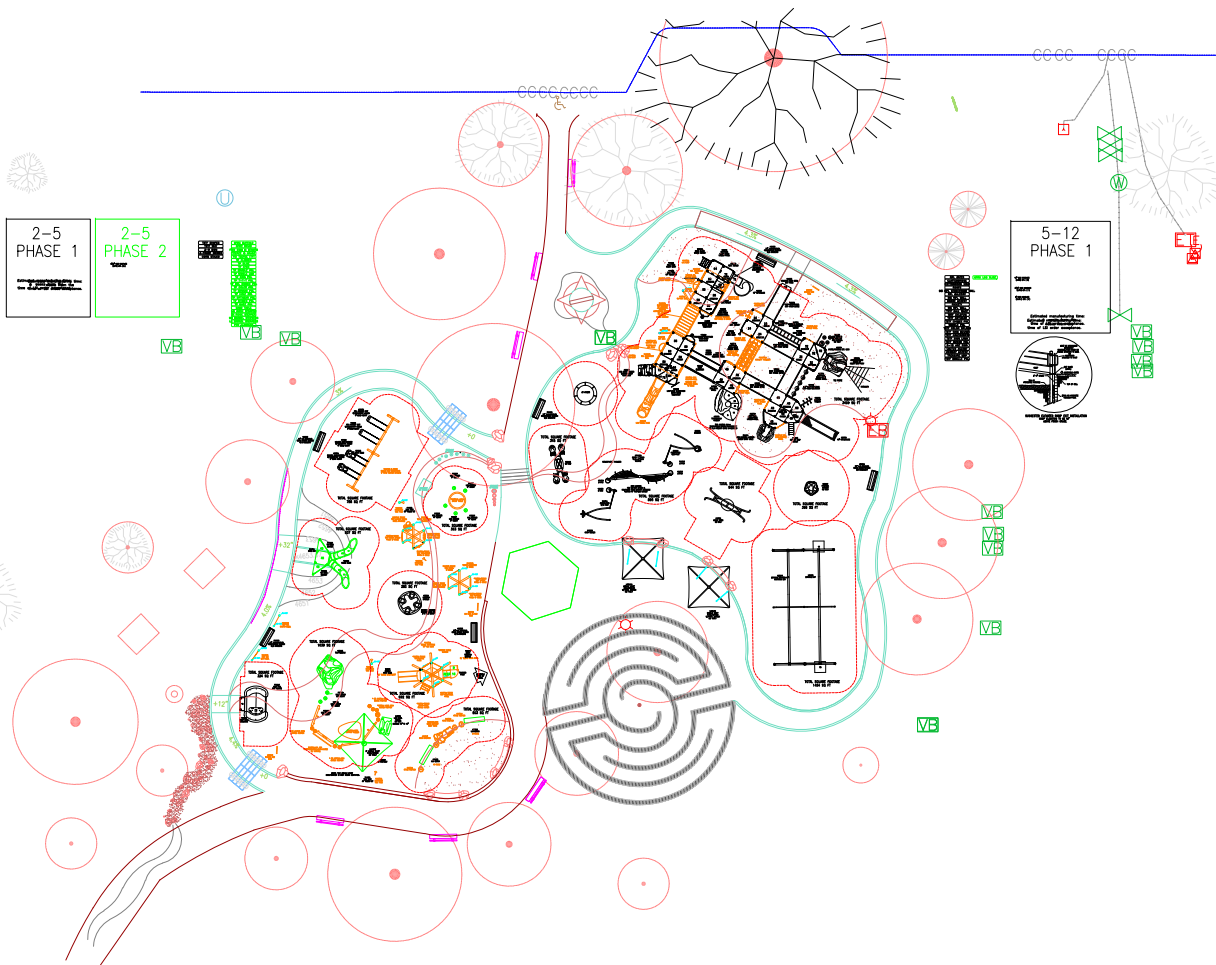
ACCESSIBLE/PROTECTIVE SURFACING TO BE A COMBINATION OF UNITARY AND LOOSE FILL MATERIALS.

DESIGNED BY:

JS

LANDSCAPE STRUCTURES, INC.
601 7th STREET SOUTH - P.O. BOX 198
ELAND, MINNESOTA 55229
PH: 1-800-328-0035 FAX: 1-763-972-6091

0/28/2015	75713-1-3	GPC/JMS
10/6/15	75313-1-2	GPC/JS
11/10/15	75313-1-1	JMS
Date	Previous Drawing #	Initials



2-5 AREA

PlayBooster®
(2-12 years)

TOTAL ELEVATED PLAY COMPONENTS	5		
TOTAL ELEVATED COMPONENTS ACCESSIBLE BY RAMP	0	REQUIRED	0
TOTAL ELEVATED COMPONENTS ACCESSIBLE BY TRANSFER	5	REQUIRED	3
TOTAL ACCESSIBLE GROUND LEVEL COMPONENTS SHOWN	60	REQUIRED	2
TOTAL DIFFERENT TYPES OF GROUND LEVEL COMPONENTS	27	REQUIRED	2

5-12 AREA

PlayBooster®and Evos®
(5-12 years)

TOTAL ELEVATED PLAY COMPONENTS	30		
TOTAL ELEVATED COMPONENTS ACCESSIBLE BY RAMP	20	REQUIRED	15
TOTAL ELEVATED COMPONENTS ACCESSIBLE BY TRANSFER	30	REQUIRED	15
TOTAL ACCESSIBLE GROUND LEVEL COMPONENTS SHOWN	19	REQUIRED	0
TOTAL DIFFERENT TYPES OF GROUND LEVEL COMPONENTS	14	REQUIRED	0



Shane's Inspiration
Island Grove Regional Park
Greeley Colorado

Rocky Mountain
Recreation, Inc.
Nancy Christie

SYSTEM TYPE:
Playbooster

DRAWING #:
75313-1-6

